

The making
Of

A MINI MUSIC VIDEO

By:
Ethan Huang
2023





Inspiration

Short Documentaries



Short Films



Music Videos



Corridor Crew





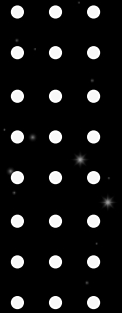
**Finished
Product**

A futuristic space scene featuring a bright light source at the top center, casting a beam of light down. The background is a dark blue space filled with stars. In the foreground, there are floating islands with green vegetation and white clouds. The text "SPACE TIME" is prominently displayed in the center.

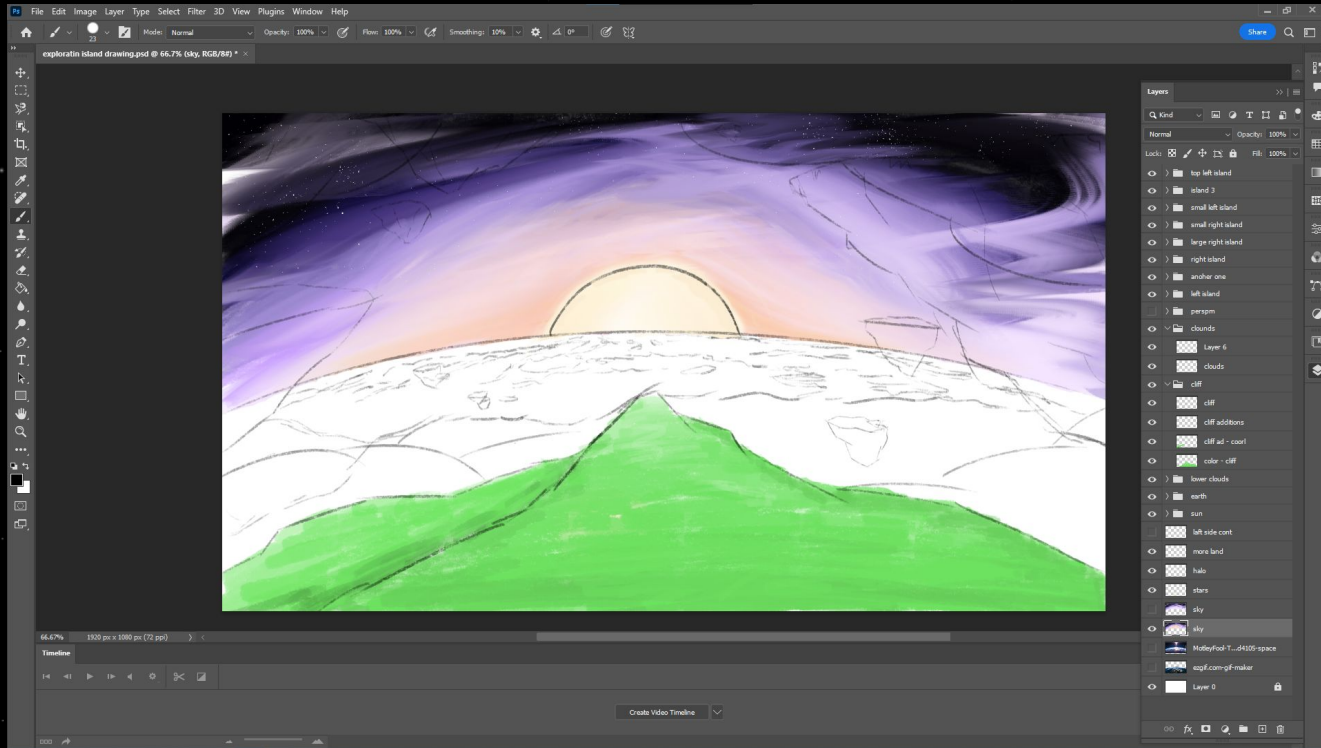
SPACE TIME

Part I

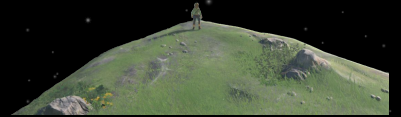
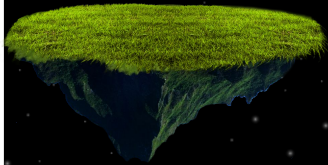
Animating Still Images



The Original Idea



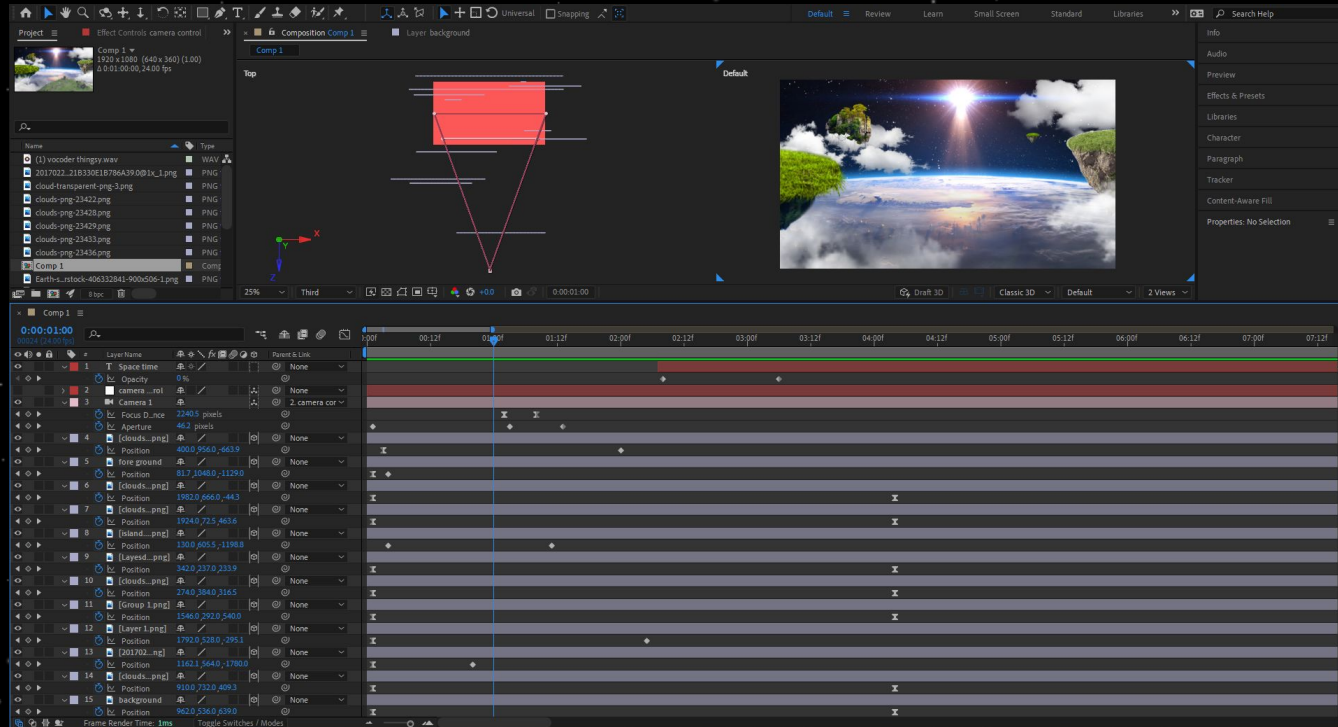
The Final Idea



The Process



Keyframe Moving Assets





Edit 3D camera settings

Before



After





Part II

Visual Effects

The Process



Before



CRT Effect

The image displays the Adobe After Effects software interface with a 'CRT Effect' applied to a video clip. The main composition window shows a space shuttle launch from a low-angle perspective, with a blue-tinted CRT scanline effect overlaid. The interface includes several panels:

- Effects Panel:** Shows the 'Lumetri Color' effect applied to the video. The 'Basic Correction' section is active, with 'Input LUT' set to 'None' and 'Intensity' at 100.0. The 'Color' section has 'White Balance' set to 0.0, 'Temperature' at 0.0, 'Tint' at 0.0, and 'Saturation' at 100.0. The 'Light' section has 'Exposure' at 2.0, 'Contrast' at 24.1, 'Highlights' at 39.3, 'Shadows' at 0.0, 'Whites' at 31.0, and 'Blacks' at 0.0. The 'Creative' section is checked.
- Effect Controls Panel:** Shows the 'Grid' effect applied to the video. The 'Anchor' is at 960.0, 540.0. The 'Size From' is 'Width & Height'. The 'Width' is 2756.0, 'Height' is 3.0, and 'Border' is 3.0. The 'Feather' is 0.0. The 'Color' is set to 'Fill Color'. The 'Opacity' is 100.0%. The 'Blending Mode' is 'Overlay'. The 'Lens Distortion' section has 'Curvature' at 50, 'Vertical De.' at 2, 'Horizontal' at 0, 'Vertical Pri.' at -1, and 'Horizontal' at 1. The 'Fill Color' is checked.
- Timeline Panel:** Shows the video clip 'v1' on track V1, with a 'Comp 1.mp4' layer on track V2. The 'Audio 1' track is also visible.
- History Panel:** Shows the 'Lumetri Color' effect applied to the video clip.

Glow

The screenshot displays the Adobe Premiere Pro interface with the 'Glow' effect applied to a video clip. The interface is divided into several panels:

- Effects Panel (Left):** Shows the 'Lumetri Color' effect selected. The 'Basic Correction' and 'Creative' sections are visible. The 'Look' is set to 'None'. A preview window shows the video with a blue glow effect. Below the preview are sliders for 'Intensity' (set to 100.0) and 'Adjustments' (Faded Film, Sharpen, Vibrance, Saturation). Two color wheels for 'Shadow Tint' and 'Highlight Tint' are shown, both set to a blue hue. A 'Tint Balance' slider is also present.
- Effect Controls Panel (Top Middle):** Shows the 'Glow' effect parameters: Threshold (99.0%), Cutoff (50.0%), Gaussian Blur (50.0), and Repeat Edge (checked).
- Program Monitor (Top Right):** Displays the video preview with the 'Glow' effect applied. The source is identified as 'Y2Mate.is - SPACE SHUTTLE - BEAUTY OF THE EARTH (HD)'. The timeline shows the clip starting at 00:00:16:26 and ending at 00:01:04:27.
- Timeline (Bottom):** Shows the multi-track editing interface. The video track (V1) contains the clip with the 'Glow' effect. The audio track (A1) shows a green waveform. The timeline is marked with timecode from 00:00:00:00 to 00:01:04:00.

Comparison





**Why should you
care?**

Why should you care?

- Most visual effects are easier than they seem
- It only takes a search on Youtube and your time
- If you have an idea

Give it a try!



**Thank
You!**